

## *REGIONAL MEETINGS and BEST PRACTICE SEMINARS*

One of the priority areas SSPA is keen to develop further in 2009 is the expansion of Regional Meetings throughout NZ. SSPA is seeking to build on the collaborative relationships already developed and will be strengthening this work with the appointment of four Regional Development Officers located in Auckland, Wellington and Christchurch and one Regional Development Officer to support and respond to the needs of Pacific Island providers. It is envisaged that the Regional Development Officers will in the first instance be employed for one day per week. There are advantages in the Regional Development Officer being attached to a local community, where they are likely to be known and thus able to forge closer relationships with providers. It is our preference for Regional Development Officers to be located within a host agency, although consideration may be given to working from home. This is an exciting new development for SSPA and if you would like more information, a job description and application form, or would like to offer your services as a host agency please contact Jocelyn Wilson, Phone 06 3640567 or e mail [jocwilson@theorganisation.org.nz](mailto:jocwilson@theorganisation.org.nz)

### *The Purpose of Regional Meetings -*

- *Provides a forum for information and feedback about local issues*
- *Helps build a strong Social Services Sector to interact with each other and local and central Government*
- *Opens up opportunities for collaboration and new ways of working*
- *Provides an opportunity for shared training which is cost effective*
- *Provides an opportunity for Inter-Agency working on joint projects*
- *Encourages increased membership of Social Service Providers Aotearoa and increases the profile of SSPA*

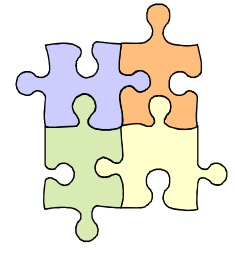
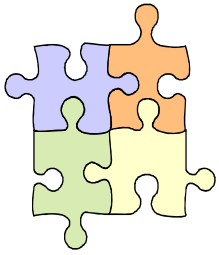
Find out more about organising a Regional Meeting in your area by phoning Jocelyn Wilson on Ph 063640567, e mail [jocwilson@theorganisation.org.nz](mailto:jocwilson@theorganisation.org.nz). We're here to help with "How to Kits" and financial support

## *Best Practice Seminars*

Best Practice Seminars provide SSPA's membership with affordable training opportunities to further develop skills and to encourage safe practice. In addition Best Practice Seminars provide an opportunity for SSPA's members to network and work collaboratively by involving CYFS and FACS staff in joint training opportunities. A variety of Best Practice topics has been provided in the last year including **Strength Based Practice workshops, Attachment and Bonding, Working with Vulnerable Children, Working with Maori, The Treaty of Waitangi and Pacific Providers, Organisational Development, Governance and Implications for Pacific Providers.** Before we prepare our programme for 2009, we would love to hear what training needs you have identified and any suggestions you may have for organising a Best Practice Seminar in your area.

In line with the priorities outlined in our Strategic Plan we are keen to respond to training needs identified by our Maori and Pacific Island members. However, we need to know what you would like organised and we will work with you to meet these needs. Our new Regional Development Officers will provide help in organising the seminars with you

SSPA has developed a Regional Meeting and Best Practice Guideline manual to assist with setting up meetings and training. Financial assistance is available to assist with the cost including venue hire,, refreshments, technical equipment and the cost of the facilitator or trainer. **We're waiting to hear from you!!**



## SHAPE OF THINGS TO COME?

SSPA Canterbury has been working on an exciting new collaborative project with the Ministry of Social Development during 2008. The project aims to ensure that children and families receive the right service, at the right time.

As we've worked together and expanded the ideas we have become more and more excited about the prospect for developing a truly integrated system that will be better, first and foremost for families but also for agencies.

The proposed Multiple Pathways model reflects an overarching vision for a social service sector that collaborates together, plans together and provides responsive services for families in Canterbury.

Currently, referrers and families wishing to self refer do so by ringing around many agencies to find one that will suit their needs. It can be a confusing maze for referrers to negotiate and it is usual for referrers to be faced with long waiting lists and delays before they can access the required service. Referrals may also be made to many agencies simultaneously in the hope that in due course at least some kind of service will be offered. This in turn leads to duplication and clogged waitlists.

While the proposed model does not seek to exclude families from referring directly to individual agencies, it does provide an identified entry point and pathway into the child and family NGO sector. Only one call is required to access an array of services and the beauty of it is – there is no 'wrong door' into the system. The referrer will get a response that may range from information and advice through to referral to a broad continuum of services.

The linking up of the combined capacity of the sector will create efficiencies making it far more possible for agencies to provide a fully responsive service.

The model reflects a social service system that is joined up and seamless to the family. The intake call is received and is processed by a multi-agency response team. The team is comprised of representatives of partnering agencies. The ongoing referral for service, or services, will be tailored for the family according to their choice, strengths and individual needs.

The model seeks to coordinate workflow across services and an audit of the current waiting lists for Agencies is planned in the early stages. This will assist to map the demand for services as well as decrease the duplications that exist in order for the workflow to be streamlined.

Sitting alongside the model is a multi agency reference group that has the focus of whole-of-sector planning. Tracking the sector demands and gaps in services and informing broader social policy. The governance for this project will sit with the Canterbury Strengthening Families management group.

We are currently waiting to see if the project will receive pilot funding from the Ministry of Social Development that will enable this exciting concept to be implemented, changing the social service landscape, for the better.

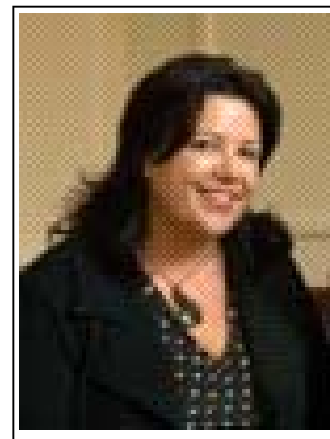
Donna Ellen  
Christchurch Methodist Mission

For SSPA Canterbury

**If you would like further information about the SSPA Canterbury project please contact Donna Ellen on Ph 03 3534693 or e mail [donna@mmsi.org.nz](mailto:donna@mmsi.org.nz)**

## *From the Minister's Desk.....*

*Hon. Paula Bennett*



I am really looking forward to working with the sector as we develop and implement the new government's social policy programme. I am under no illusions that it is going to be a challenge but I am ready and excited about the opportunities this brings.

We all share a common goal. That is that all children are our children. We all have a role to play in keeping kids' safe and getting them to see their future and how bright it can be.

Recent media attention has once again brought child abuse and neglect to the minds of all New Zealanders. A change in government does not dispel the seriousness of harm to children and the need to address this in as many ways as possible. This includes addressing family violence.

Many of you would have participated in White Ribbon Day on 26 November. This was an opportunity to reinforce the message that society does not condone violence. I believe that we must continue to challenge the attitudes and behaviours that tolerate violence, and I was happy to be part of the Family Violence Book Launch "its time we started telling these stories". This book follows on from the huge success of the second phase of the "Its not Ok" ads featuring men telling their personal stories.

This success has demonstrated the power and impact personal stories can have on the way people think about family violence and the actions they take.

This Government believes that more government involvement is not the solution to every social problem, and we will get behind and support community and voluntary groups that are making a real difference in our communities. After all, community organisations know what services people in their communities need. More often than not they are the people in the community that vulnerable families go to for help.

Where the Government asks a community group to provide a service on its behalf, we will expect to pay the full cost of delivering that service. We will ensure that the requirements on community groups in regard to ongoing monitoring are proportionate to the amount of funding they are receiving, and the extent of their responsibilities. This includes making greater use of multi-year funding arrangements. We will also investigate whether a venture capital fund for the community and voluntary sector, like those that have been set up in the United Kingdom and Australia, has merit in New Zealand.

I look forward to working with you on these issues in the coming years, and I wish you and your families a happy and safe Christmas period.

### **Biography**

Paula is the MP for Waitakere and has lived in Auckland since 1992. She grew up in Taupo, attending Taupō-nui-a-tia College. Paula raised her daughter single-handedly. She worked in hospitality, secretarial and retail roles. Realising that opportunities were limited without an education Paula went to Massey University as an adult student originally studying social work but ending up with a degree in social policy.

In recent years Paula has worked in human resources and recruitment with a variety of clients from banking and finance to manufacturing. Her rapid promotion saw her managing the Auckland operation before resigning to pursue a career in politics.

"Aspiration and believing in yourself with a huge dose of hard work can make anything possible" she says.

In 2008, Paula won an electoral seat with a majority of 623 votes. She is the Minister for Social Development and Employment, Minister for Disability Issues and Minister of Youth Affairs.

## *New Immigration Policy affecting Pacific Island children*

This information is provided by To'alepai Louella Thomsen-Inder, National Executive Member of Social Service Providers Aotearoa and involves a new immigration policy for immigrant children wishing to have access to a New Zealand education. These children will now be seen as domestic students and are entitled to enrol and attend New Zealand schools.

There are two criteria:-

- (1) Parents must hold a valid work visa (Section 2 of the Education Act 1989, (e) Immigration Policy U3.35.5 (d))
- (2) It is necessary to complete and submit a Student Visa/Permit application (NZ 1012 form) U8.20 (a) E4.1)

The above does not apply if children are here with parents under the seasonal employment policy

For more information see <http://www.immigration.govt.nz/opsmanual/11694.htm>

Or contact To'alepai Louella Thomsen-Inder at [sws@pacifictrust.co.nz](mailto:sws@pacifictrust.co.nz) for further information

In addition:-

Immigration has recognised the power and control that sponsors might hold for their partners as part of the domestic violence in our communities. This has meant immigration now work through Women's Refuge to ensure that domestic violence victims (Tongan and Samoans) can apply for permanent residency and utilise the new policy. (W15.30 Special Work Permit for DV victims and apply S4.5 under residency for DV victims)

The need to prove domestic violence through hospital and police reports must come from Women's Refuge. **Applications will not be accepted unless they come through Women's Refuge.** To'alepai said many Pacific Island women would not go to a Refuge, therefore they and their children were severely disadvantaged.

Relevant websites for further information are:-

<http://www.immigration.govt.nz/migrant/general/formsandfees/formsandguides/work.htm>

<http://www.immigration.govt.nz/migrant/general/formsandfees/formsandguides/residence.htm>

<http://www.immigration.govt.nz/migrant/general/formsandfees/formsandguides/healthcharacter.htm>

### **NOTICES:**

Thank you to those members who completed the Salary Survey questionnaire. As we are so close to Christmas and the holidays I will send this survey out to members again in the New Year to ensure we have as many responses as possible. This is an important issues for the Pathways to Partnership Steering 'Group to consider in the new year when Work Force Development is on the agenda.

A reminder to those members who have not renewed their SSPA membership for the coming year  
A membership form can be downloaded from our website - [www.theorganisation.org.nz](http://www.theorganisation.org.nz)